

# Price Sheet

Available Homes in Floor Plans

Sales 903-714-7642

Date Printed: 05.18.2024



## 2024 Signature Plus

\$0

4 Beds | 2.5 Baths | 2,024 SQ FT | 2 Car Garage | 1 Story



## 1857 Signature Plus

\$0

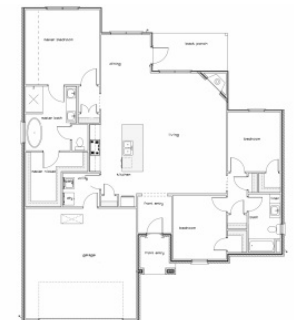
4 Beds | 2 Baths | 1,857 SQ FT | 2 Car Garage | 1 Story



## 1911 Signature

\$0

4 Beds | 2 Baths | 1,911 SQ FT | 2 Car Garage | 1 Story



## The August

\$329,900

3 Beds | 2 Baths | 1,650 SQ FT | 2 Car Garage | 1 Story



## The Poppy

\$334,900

3 Beds | 2 Baths | 1,751 SQ FT | 2 Car Garage | 1 Story



## The Parker

\$344,900

4 Beds | 2 Baths | 1,800 SQ FT | 2 Car Garage | 1 Story



## The Magnolia

\$364,900

4 Beds | 2.5 Baths | 1,971 SQ FT | 2 Car Garage | 1 Story



## The Aster

\$369,900

4 Beds | 2.5 Baths | 2,001 SQ FT | 2 Car Garage | 1 Story



## The Violet

\$379,900

4 Beds | 2.5 Baths | 2,045 SQ FT | 2 Car Garage | 1 Story



## The Hugh

\$389,900

4 Beds | 2.5 Baths | 2,143 SQ FT | 2 Car Garage | 1 Story



## 2100 Signature Plus

\$469,900

3 Beds | 2 Baths | 2,100 SQ FT | 2 Car Garage | 1 Story



## 2503 Executive

\$584,900

4 Beds | 3 Baths | 2,503 SQ FT | 2 Car Garage | 2 Story



## 2500 Executive

\$584,900

4 Beds | 3 Baths | 2,500 SQ FT | 2 Car Garage | 2 Story



### 2900 Executive

\$654,900

5 Beds | 4 Baths | 2,900 SQ FT | 2 Car Garage | 2 Story



### 3136 Executive

\$679,900

5 Beds | 4 Baths | 3,136 SQ FT | 2 Car Garage | Story



### 3100 Executive

\$679,900

4 Beds | 4 Baths | 3,100 SQ FT | 2 Car Garage | 2 Story



### 3130 Executive

\$694,900

5 Beds | 4 Baths | 3,130 SQ FT | 2 Car Garage | 2 Story



FRONT ELEVATION - 1555 MAPLE CIRCLE

### 1555 Maple

\$850,000

5 Beds | 4.5 Baths | 3,866 SQ FT | 3 Car Garage | 2 Story



FRONT ELEVATION - 9261 CADDO ROAD, CA

### 9261 Caddo

\$900,000

4 Beds | 5 Baths | 3,898 SQ FT | 3 Car Garage | 2 Story

---